

Installation manual

**Point LED**

**Point LED NT (surface)**



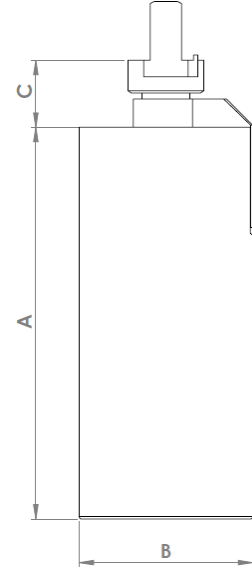
220-240V/50-60Hz

**1. Dimensions**

Power [W] /ver.	A	B	C	E	Weight
15, 21, 29 / track	180	80	32	-	1,0kg
15, 21, 29 / NT (s.)	180	80	55	45	1,1kg



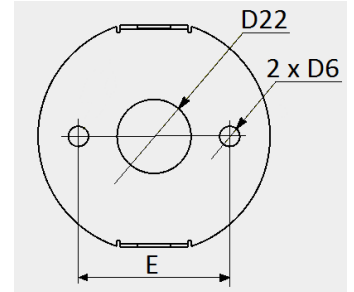
NT Version (surf.)



Track version

**2. Installation**

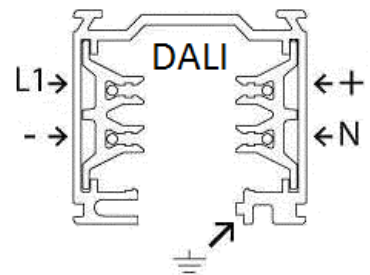
- take the luminaire out of the package and place it on a stable surface;
- slide the luminaire into a 3-phase electrical track (track version) or fix the mounting brackets using two bolts in „E” spacing (NT – Surface version, figure to the right)
- choose the live phase for the luminaire (doesn't apply to NT – surf.) or connect the power accordingly to markings/wire colours and fix the luminaire in the base (NT – surface version)



Light source in the fitting cannot be switched or replaced by anyone but manufacturer, his Service representative or similarly qualified personnel.  
 Manufacturer doesn't provide nail anchors.

**3. Important warnings:**

- Do not install the fixtures in areas without an exchange of air.
- The manufacturer cannot be considered liable for any damages deriving from improper, wrong and unreasonable use of the fitting.
- Luminaries may be installed by qualified personnel only.
- Any manipulation inside the luminaire when power supply is on causes the risk of electric shock.
- Manufacturer is not responsible for any flaws resulting from not complying with recommendations included in this instruction manual.
- Manufacturer reserves a right to change the construction of the product



The European Directive 2002/96/EC on waste electrical and electronic equipment, requires that electric and electronic devices must be disposed of in the normal household waste. The crossed out wheeled bin is reproduced in order to remember obligations towards separately collection. For correct disposal, please use authorized waste disposal facilities or returned to the distributor at the date a new lighting fitting is purchased. Lamps, if disposed together with the lighting fitting, shall not be broken up since they contain substances which are highly polluting for the environment. Unauthorized disposal of the foregoing waste material is punishable by law.

